

FusionSolar Access Guide

(Applies to New PV Plants with LUNA2000)



Copyright © Huawei Technologies Co., Ltd. 2021. All rights reserved.

This document is intended for installers and provides guidance for connecting PV plants with LUNA2000 Smart String Energy Storage Systems to the management system.

Document Validity: Before the launch time of the official version

- Please download the FusionSolar APP of the latest version (the blue icon) according to the following guide and modify the domain name to **intlobt.fusionsolar.huawei.com** on the login page. Then you can use the original username and password instead of re-registration to login and finish local commissioning & plant registration.
- After 30th April, all your plant data will be transferred to original server. In this case, you can login to the original domain name (**intl.fusionsolar.huawei.com**) and manage all PV plants in one system. We will notify you of the specific migration time in a system bulletin.

1 Downloading and Installing the FusionSolar App

Click the following link or scan the QR code on the right to download and install the FusionSolar app.

<https://intlobt.fusionsolar.huawei.com/fusionsolarapp>



Note:

- After the launch time of the official version, download and install the FusionSolar app by referring to the *FusionSolar App Quick Guide*.
- The FusionSolar app icon of the new version is blue.

If you use the FusionSolar app for the first time, you need to set the domain name of the management system (**intlobt.fusionsolar.huawei.com**).

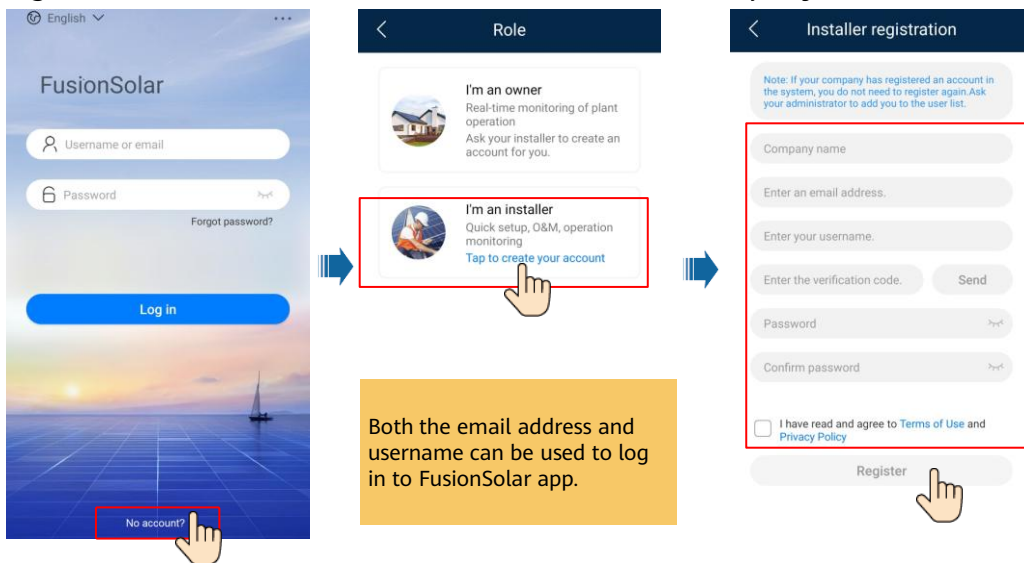


2 Installing and Powering On Devices

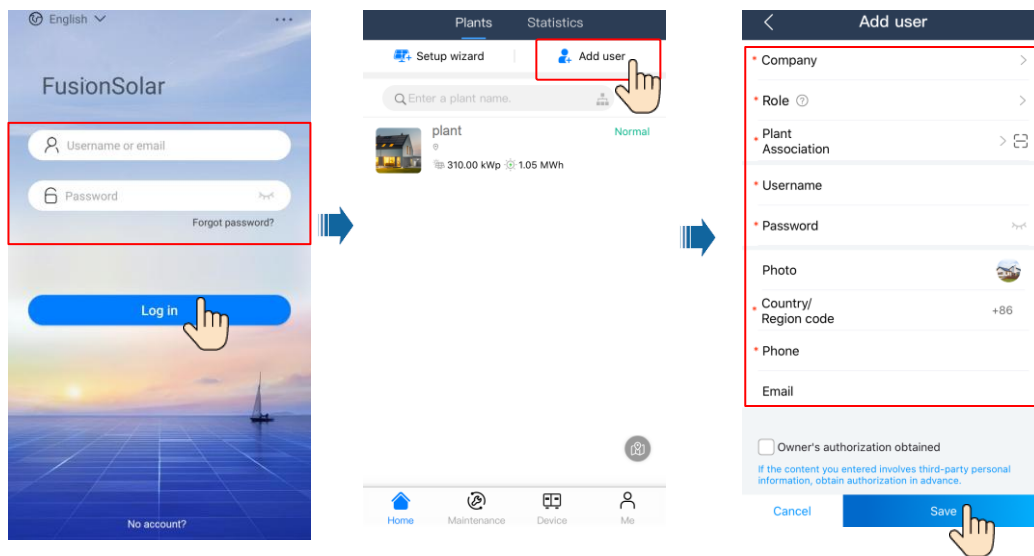
For details, see the quick guide of the corresponding device.

3 Register an Installer Account (Optional, for Installers Without an Account)

- Register the first installer account and create a company account.

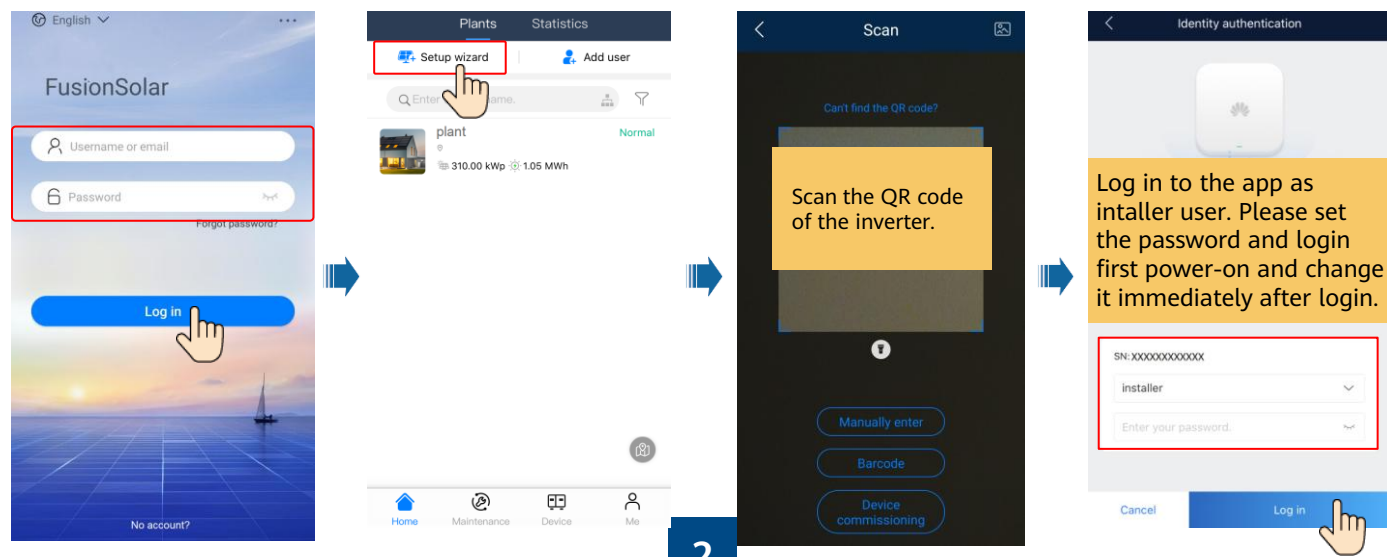


- To create multiple installer accounts for the same company, log in to the FusionSolar app and tap **New User**.



4 Log in and Start Setup Wizard

Local commissioning using the built-in WLAN of the inverter



After the login is successful, the system prompts you to upgrade the inverter. Upgrade the inverter as prompted and log in to the inverter again.

If a message is displayed indicating that the battery version needs to be upgraded, perform the following operations:

Upgrade delay is recommended.

At the first login, the **Quick settings** screen is displayed by default.

Set the local grid code of the region.

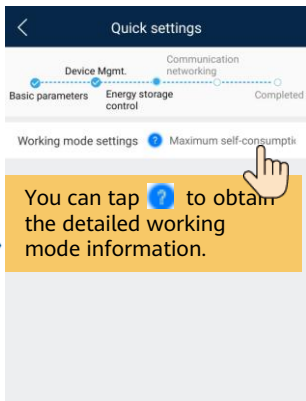
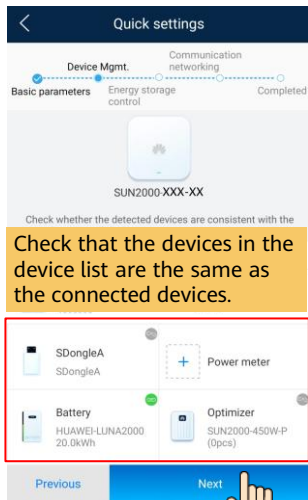
If **Sync phone time** is enabled, the time and time zone of the inverter are synchronized with those of the mobile phone.

Next

In a non-cascading scenario, the step of **Searching for cascaded inverters** is not involved.

FINISH

Set network parameters and domain name.



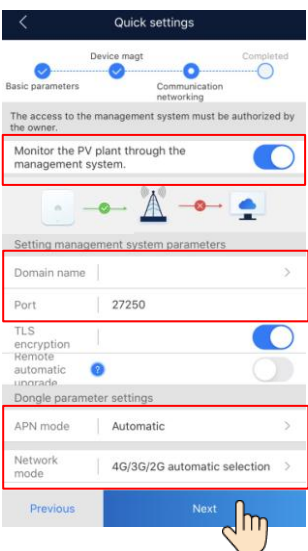
WLAN communication

Enabled **Monitor the PV plant through the management system.**

Set the **Domain name** to **intlobt.fusionsolar.huawei.com** and **Port** number to **27250.**

Select a router that can connect to the Internet and enter the router password.

Set network parameters and domain name.

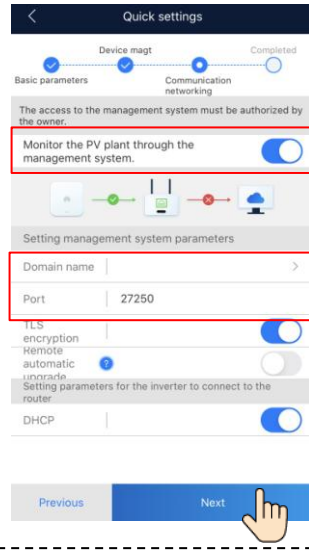


4G communication

Enabled **Monitor the PV plant through the management system.**

Set the **Domain name** to **intlobt.fusionsolar.huawei.com** and **Port** number to **27250.**

By default, **APN mode** is set to **Automatic**. When this mode cannot be used to access the Internet, set the parameter to **Manual**. In this case, set the parameters related to the SIM card based on the information obtained from the carrier.

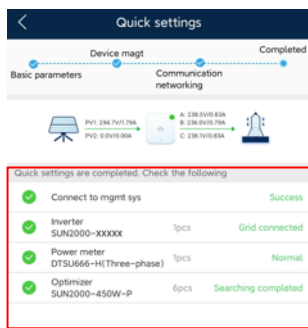
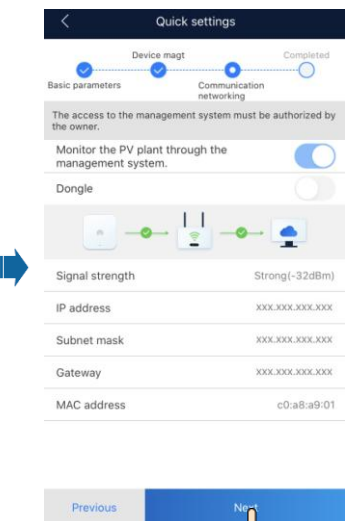


FE communication

Enabled **Monitor the PV plant through the management system.**

Set the **Domain name** to **intlobt.fusionsolar.huawei.com** and **Port** number to **27250.**

If **Ethernet** is disabled, the network cable is not connected. Reconnect the network cable.



Connect your mobile phone to the Internet.

Ensure that the devices are consistent with the actual connected devices.

Add a plant.

The process of adding a plant is shown in three sequential screens:

- Create Site:** The user is presented with two options: "Add plant" and "Connect to existing plant". A hand icon points to the "Add plant" option.
- Add plant (Basic Info):** This screen contains a form with the following fields: "Country/Region", "Company", "Plant name", "Total string capacity(kWp)", "Grid connection date", "Plant address", "Plant time zone", "Owner", "Contact method", and a checkbox for "Owner's authorization obtained". A hand icon points to the "Next" button at the bottom.
- Add plant (Add devices):** This screen shows the "Device SN" field with a scan icon and a list of "Added devices" with details like "Device SN", "Device type", and "Device model". A hand icon points to the "Submit" button at the bottom.

Create an owner account.

The process of creating an owner account is shown in two sequential screens:

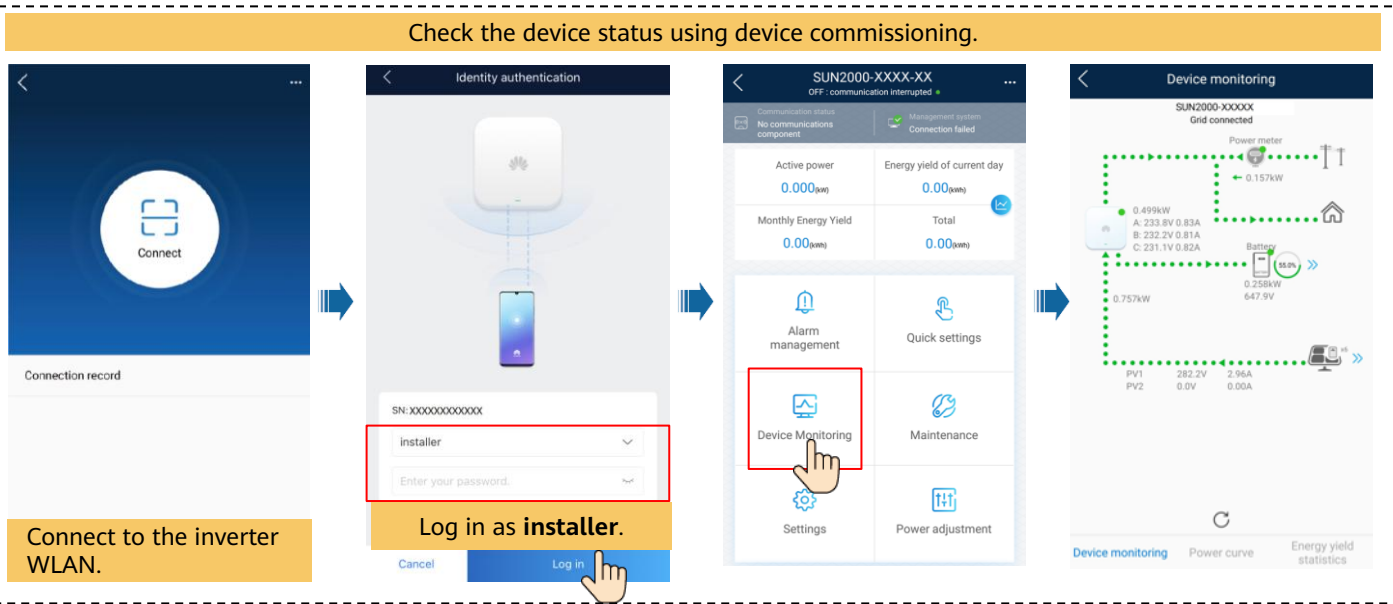
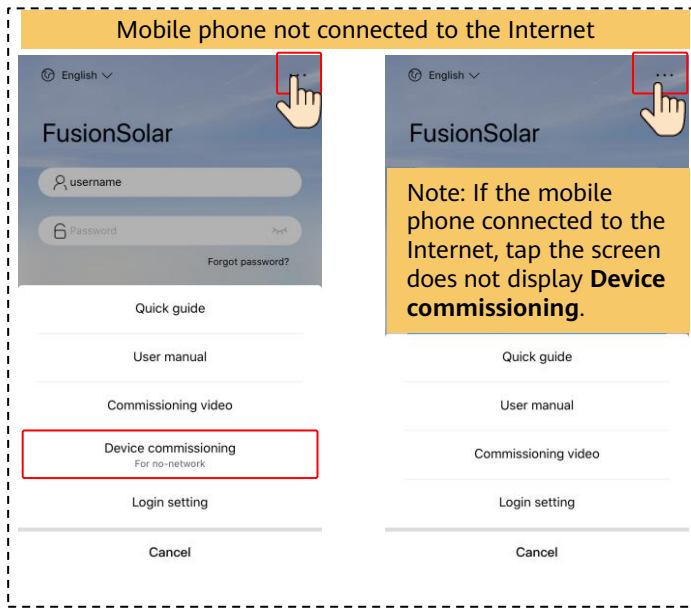
- Plants/Statistics:** The user is in the main dashboard. A hand icon points to the "Add user" button in the top navigation bar.
- Add user:** This screen contains a form with the following fields: "Company", "Role", "Plant Association", "Username", "Password", "Photo", "Country/Region code", "Phone", and "Email". There is also a checkbox for "Owner's authorization obtained". A hand icon points to the "Save" button at the bottom.

5 Checking the Device Status

- Checking the Device Status Using Device Commissioning

The process of checking device status using device commissioning is shown in three sequential screens:

- Login:** The user is on the "FusionSolar" login screen. A hand icon points to the "Log in" button.
- Plants/Statistics:** The user is in the main dashboard. A hand icon points to the "Me" icon in the bottom navigation bar.
- demo:** The user is in the "demo" profile page. A hand icon points to the "Device commissioning" option in the menu.



- Checking the Device Status Remotely.

